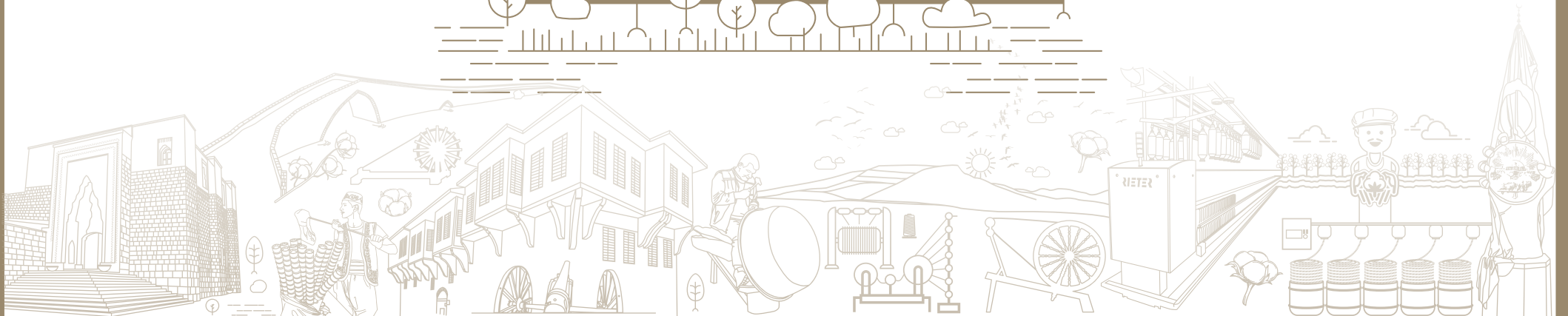
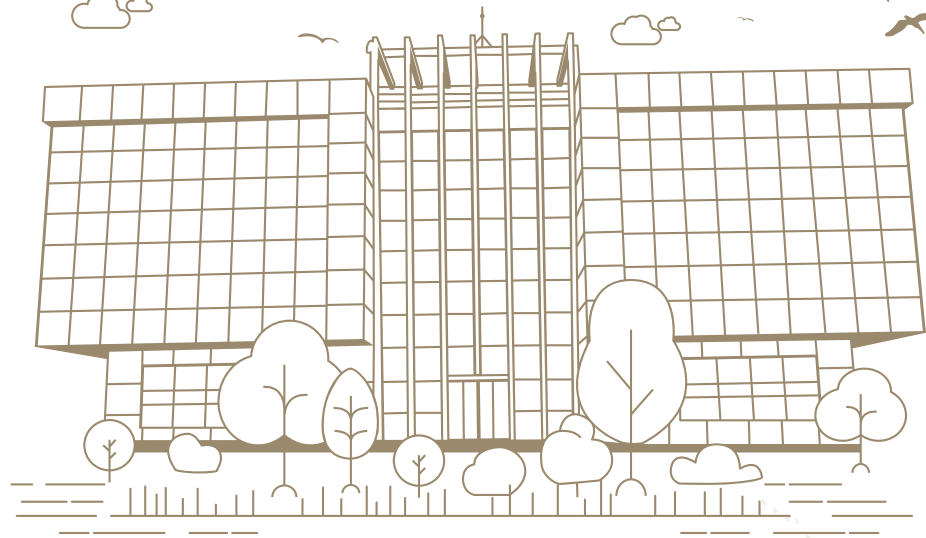


EZEL

TEKSTİL



ÜRETİM & KAPASİTE

KAPALI ALAN: 150.000 m²

ÇALIŞAN SAYISI: 750

İŞLETME SAYISI: 5

TOPLAM ÜRETİM: 3.000 TON / AY

KOMPAKT İŞLETMESİ: 750 TON / AY

KARDE İŞLETMESİ: 500 TON / AY

PENYE İŞLETMESİ: 750 TON / AY

OPEN END İŞLETMESİ: 750 TON / AY

KATLAMA / BÜKÜM: 250 TON / AY





PRODUCTION & CAPACITY

CLOSED AREA: 150.000 m²
NUMBER OF EMPLOYEES: 750
NUMBER OF MILLS: 5
PRODUCTION CAPACITY: 3.000 TON / MONTH

RING COMPACT MILL: 750 TON / MONTH
RING CARDED MILL: 500 TON / MONTH
RING COMBED MILL: 750 TON / MONTH
OPEN END MILL: 750 TON / MONTH
DOUBLING / TWISTING: 250 TON / MONTH



RİNG PENYE

Üretim Kapasitesi: 750 ton/ay
Üretilen İplik: Ne 4/1 ile Ne 30/1 arası
düz iplik, flamlı (slub) iplik, multicount
(MC) multitwist (MT) iplik, core spun iplik
ve flamlı (slub) core spun iplik
İşlenebilen Elyaf lar: Pamuk, Polyester,
Viskon, Keten, Bambu, Modal, Tencel ve
karışımları

RİNG COMBED

Production Capacity: 750 tons/month
Yarn Produced: Ne 4/1 to 30/1, regular yarn, slub yarn, multicount (MC), multitwist (MT) yarn, core spun yarn and flame (slub) core spun yarn
Fibers Used: Cotton, polyester, viscose, linen, bamboo, modal, and a mixture of these raw materials





RİNG KARDE

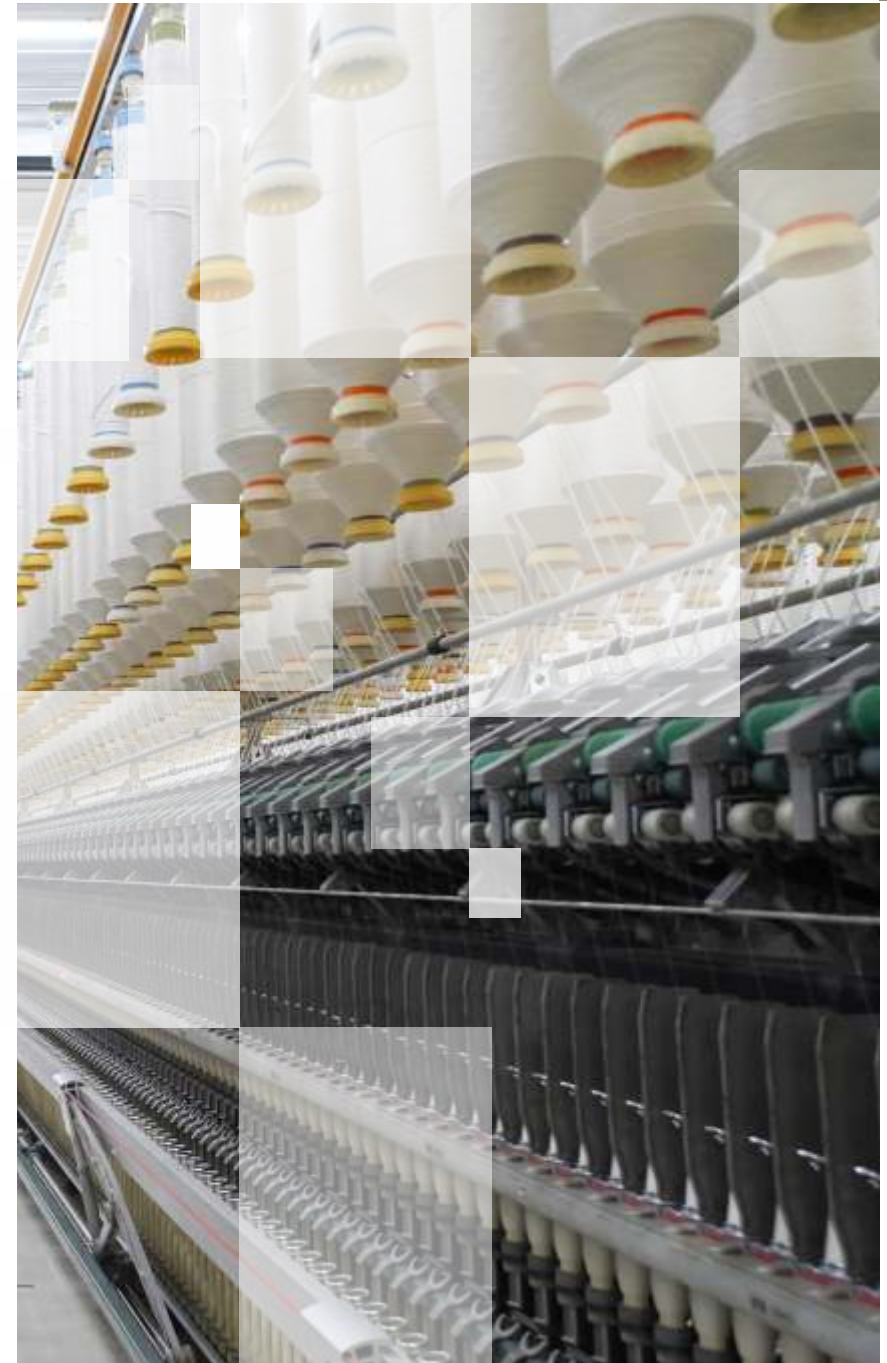
Üretim Kapasitesi: 500 ton/ay

Üretilen iplik: Ne 4/1 ile 40/1 arası düz iplik, flamlı (slub) iplik, multicount (MC), multitwist (MT) iplik, core spun iplik ve flamlı (slub) core spun iplik

İşlenebilen Elyaf lar: Pamuk, Polyester Viskon, Keten, Bambu, Modal, Tencel ve karışımları

RİNG CARDED

Production Capacity: 500 tons/month
Yarn Produced: Ne 4/1 to 40/1, regular yarn, flame (slub) yarn, multicount (MC), multitwist (MT) yarn, core spun yarn and flame (slub) core spun yarn
Fibers Used: Cotton, polyester, viscose, linen, bamboo, modal and a mixture of these raw materials





RİNG KOMPAKT

Üretim Kapasitesi: 750 ton/ay

Üretilen İplik: Ne 16/1 ile 120/1 arası düz iplik, flamlı (slub) iplik, multicount (MC) multitwist (MT) iplik, core spun iplik, flamlı (slub) core spun iplik ve siro iplik

İşlenebilen Elyaf lar: Pamuk, Polyester, Viskon, Keten, Bambu, Modal, Tencel ve karışımları

RİNG COMPACT

Production Capacity: 750 tons/month
Yarn Produced: Ne 16/1 to 120/1, regular yarn, flame slub yarn, multicount (MC), multitwist (MT) yarn, core spun yarn, flame (slub) core spun yarn and siro yarn
Fibers Used: Cotton, polyester, viscose, linen, bamboo, modal, tencel and a mixture of these raw materials





KATLAMA & BÜKÜM

Üretim Kapasitesi: 200 ton/ay
Üretilen İplik: Ne 4/2 ile Ne120/2 arası
düz ve elastanlı bükümler ve 8 kata
kadar büküm işlemi

DOUBLING & TWISTING

Production Capacity: 200 tons/month.
Yarn Produced: Regular and elastane
twists from Ne 4/2 to Ne 120/2 and up to
8 threads could be twisted





OPEN END

Üretilen İplik: Ne 4/1 ile 40/1 arası düz ve flamlı (slub) iplikler

İşlenebilen Elyafar: Pamuk, Polyester, Viskon, Keten, Bambu, Modal, Tencel ve karışımları

OPEN END

Yarn Produced: Ne 4/1 to 40/1, regular yarn and flame (slub) yarn

Fibers Used: Cotton, polyester, viscose, linen, bamboo, modal, tencel and a mixture of these raw materials





KALİTE KONTROL

İplik düzgünlüğü ölçümünde
USTER TESTER 5

İplik mukavemet ölçümünde

USTER TENSORAPID 4 - USTER TENSOJET 4

İplik numarası ölçümünde

ZWEIGLE L232 ELECTRONİK YARN REEL

USTER AUTOSORTER 5

İplik bükümü ölçümünde

ZWEIGLE D315 YARN TWIST EQUIPMENT

Pamuk ve şerit kalite ölçümünde

USTER NEP TESTER 720 - USTER AFIS PRO 2

Pamuk kalite ölçümünde

USTER HVI SPECTRUM



QUALITY CONTROL

In yarn evenness measurement:

USTER TESTER 5

In yarn strength measurement:

USTER TENSORAPID 4 - USTER TENSOJET 4

In yarn count measurement:

ZWEIGLE L232 ELEKTRONIK YARN REEL

In yarn twist measurement:

ZWEIGLE D315 YARN TWIST EQUIPMENT

In cotton and ribbon quality measurement:

USTER NEP TESTER 720 - USTER AFIS PRO 2

In cotton quality measurement:

USTER HVI SPECTRUM





444 99 46

T: +90 344 251 52 00

F: +90 344 251 52 11

marketing@ezeltekstil.com

Ezel Mensucat Sanayi ve Ticaret A.Ş.

Karacasu Ferhuş Mahallesi Havaalanı Caddesi
No: 40/A Dulkadiroğlu / Kahramanmaraş

www.ezeltekstil.com

